

Price List

July 2021-Prices correct at time of printing and are subject to change – all prices are GST inclusive



POTTERY WORKSHOPS AND CLASSES

**SUPPLIERS OF CLAY, GLAZES, RAW MATERIALS, REFRACTORY EQUIPMENT
AND FIRING SERVICE**

54D Terania Street, North Lismore, NSW 2480

Tel: (02) 6621 4688

email: nrpottersupplies@gmail.com

www.nrpottersupplies.com

Current Opening Hours:

MONDAY -THURSDAY 9 to 3

For urgent enquiries outside these hours

phone: 04 58238322



FOLLOW US ON
Instagram

Delivery Charges

Free Lismore delivery for one tonne of clay

Lismore, Ballina, Byron, Mullumbimby, Brunswick Heads, Grafton, Tweed/Murwillumbah, Kyogle and Richmond Valley Shires:

First item up to 25kg \$11, consecutive items up to 25kg \$

Firing Service

Standard oxidation firings only.

Kiln dimensions are:

KILN 1 TETLOW: 915mm high x 610mm wide x 610mm deep.

KILN 2 HILLDAV: 650mm high, 550mm wide, 500 mm deep

The cost is calculated on the weight of each piece prior to firing.

The cost is \$12 per kilo with a minimum charge of \$12 per firing.

Full kiln hire: KILN 1 - \$300 | KILN 2 - \$350

Bisque 1000° | Earthenware Glaze 1080°

Midfire Glaze 1220° | Stoneware Glaze 1280°

Firing Guidelines:

We will NOT fire:

- o Work that is wet. It must be 100% dry when it is placed on the firing shelves. Evaporating moisture inside the kiln can cause the kiln to rust & can damage the brick, when moisture is heated it expands and could explode.
- o Work that contains any foreign materials (paper, metal, wood, etc.) This burnout can damage elements.
- o Glazed greenware (raw clay). This can be hazardous to the work and the kiln.
- o Greenware to maturity temperatures. All work must be bisque fired first. This is a safety precaution.
- o Work with glazed bases. This will stick to the kiln shelf during firing.
- o Solid or extremely thick pieces. Anything thicker than 5cm MAX is likely to explode.

Please ensure the following:

- o Write your name or uniquely mark your work to more easily identify and collect from the shelves. This also helps to prevent accidentally collecting someone else's work.
- o Poke a hole in your piece if it is hollow and fully enclosed.
- o Get to know your materials. Be aware that some glazes run more than others. Educating yourself and becoming familiar with your materials will prevent some/most of any possible damage to your work, others' work and the kiln.
- o Take your boxes with you; they will be recycled if left behind. Shelf space is limited & is not for storage.
- o Bring your own box & packing material when you pick up your work.
- o PLEASE DO NOT touch or move another person's work either before or after firing.

DAMAGE

- If kiln shelves are damaged (due to overflowing glaze, incorrect firing temp. given, etc.) you will be charged a cleaning fee of \$15 per damaged shelf.
- If your work ruins a kiln shelf, you will be charged for the cost of replacing that shelf with a new one.
- If your work damages the interior of the kiln, you are required to pay a fine based on the severity of the damage to be determined by the us.

EXTRA INFO:

Stilting is only available for earthenware work. If you do not have your own stilts, hire stilts are available at \$0.50 per stilt.

We cater to a large range of ceramic work and because of this our kilns are NOT set up for production purposes as many factors are out of our control. We take extra precaution to make sure your work fires safely, but accidents do happen and we are unable to make any guarantees in regards to final results. Ceramics is a very volatile medium and sometimes mishaps occur that we do not expect. We strongly recommend that you do a lot of testing and leave yourself a vast amount of time to complete any project. There are always surprises in ceramics.

PREPARED CLAY BODIES



WALKER
Ceramics



Feeneys
Clay

Pottery Clays, Glazes and Colours

CLAYWORKS

If you're after specific clay from our normal suppliers that isn't in stock we can get it in for you when we next put an order in.

Buy 10 bags of clay or over to receive a 10% discount!

FEENEYS 12.5 KG

DESCRIPTION	COLOUR	TEXTURE & PURPOSE (Throw/Hand Build)	FIRING	PRICE PER BAG
RED RAKU	TC (orangey)	Course, HB	1150c	20.40
BUFF RAKU SAND	Buff	Coarse, HB	1280c	20.40
BUFF RAKU TRACHYTE	brown with speckle at 1280c	Coarse, HB	1280C	20.40
FINE BLEND	Off White	Fine, Throw/HB/ Slab/Coil – EW & SW	1280C	21.85
RED MIDFIRE	Red Terracotta	Medium, Throw/HB Plastic	1200C	20.40
HANDBUILDING	Sandy, biscuit developing flecks from 1100°C	Medium/course HB, Throw	1280C	20.40
DARK STONEWARE	Cinnamon warm brown speckle	Throw/HB Slab Wood fire Raku	1280C	20.90
WHITE SCHOOL CLAY	Off white to grey white	Suitable for all methods of forming	1000-1280	20.40

WALKERS 10 KG

DESCRIPTION	COLOUR	TEXTURE & PURPOSE (Handbuild/Throw)	FIRING	PRICE PER BAG
SCHOOL EW/SW	White @EW Grey @ SW	Medium, Throw, Slab, HB	1060-1300	22.30
NO. 10 FINE SW	White	Fine Throw	1260-1300	24.70
PB103 FINE SW	White	Fine Throw, Moulds	1280-1300	24.20
WHITE EARTHENWARE	White	Smooth Throw/HB	1060-1250	24.40
WHITE MIDFIRE	White	Smooth, plastic and forgiving. Strong as porcelain at 1200°C	1200-1240	26.30

BENNETTS TERRACOTTA 15KG	Warm terracotta	Fine	1100-1200C	32.90
-----------------------------	-----------------	------	------------	-------

CLAYWORKS 10 KG Filter pressed bodies

DESCRIPTION	COLOUR	TEXTURE	FIRING	PRICE PER BAG
SOUTHERN ICE PORCELAIN	White V. Translucent	120# Fine. Throw	1260-1300C	45.80
COOL ICE PORCELAIN	White, translucent	120# Fine. Throw	1186-1240C	45.80
SCULPTURAL FINE EW/SW BLEND	Cream/ White	Sculpt Fine 30# Sculpt Coarse 16#	1300C	24.50
Cone 6 – C6W	Grey White	120# Fine. Throw Handbuild	1220C	25.50
Chris' Light Speckle Midfire	Off white speckle	30# throw / hand build	1220C	24.50
Warm Sculptural	Light Terracotta	30#sculpt	1220C	24.50

KEANE'S CLAYS 12.5KG

DESCRIPTION	COLOUR	TEXTURE & PURPOSE (Handbuild/Throw)	FIRING	PRICE PER BAG
NO. 37 Earthenware	White	Fine/Plastic Throw,HB	1080-1100C	27.65
Earthenware 37G	White	5% grog HB	1100C	26.65
Earthenware G	Heavily Grogged EW	HB	1100°	26.45
Terracotta	Terracotta Red	Fine Throw	1100c	25.80
Red Terracotta	Rich warm red	Fine Throw	1080-1100C	26.65
White Raku	White	Medium HB, Throw	EW or SW	25.80
Raku T	Warm, Speckle at SW	Medium HB, Throw	EW or SW	25.70
Special K	White	Coarse HB	Raku, EW or SW 1300C	28.20
NO. 7 Stoneware	White	Fine, smooth, plastic Throw	1250-1300C	27.65
No. 7 + Speckle	Speckled White	Fine, Smooth Plastic Throw	1280	27.65
NO. 5	Buff with pepper iron fleck	Fine Plastic Throw	1280-1300C	26.65
5B (No. 5 + 10% fine grog)	Buff with pepper iron fleck	Plastic, Throw	1280-1300C	26.65
NO. 9 Stoneware	Rich Brown	Medium, Throw	1300C	26.65
NO. 33 Stoneware	Grey with speckle	Medium, Throw,HB	1300C	26.65
Porcelain	White	Fine Throw, HB	1300C	34.70
Lumina High Fire Porcelain	Crisp White in Oxidation Blue/White in Reduction	Smooth Throw	1300C	45.00
Lumina Mid Fire Porcelain	Pure White Translucent	Smooth Throw	1200-1240	45.00
Ironstone	Iron heavy clay designed for reduction.	Plastic. Throw, HB	1300C	28.50
Toast	Warm Buff	Heavily grogged HB/Throw	1300C	26.60
No. 33 Midfire	warm buff body with a beautiful iron fleck	Medium, Throw,HB	1220C	27.00

Wood Fire	fine, plastic flashing in oxidation,	Throw, HB	1300	29.70
------------------	---	-----------	------	-------

	reduction and wood firing			
Warm Mid Fire 33	chocolate-warm red	Throwing	1220C	27.00

Black Midfire	Black <i>Note: Best to use zinc free clear glaze for maximum colour tone</i>	Throw	1200-1220	45.00
No. 6	White	Throw	1220	28.00
No. 6 + Speckle	White	Throw	1220	28.00

Walkers Air Drying Clay - White or Red 'Sun' Clay

\$28 per 5kg bag / \$48 per 10kg bag

Self hardening artist clay for school, home, arts and crafts. Sun Clays are great for modelling, throwing, sculpting and thousands of hobby projects. Produces a finished product which dries leather hard in 24 hours and rock hard within several days. Decorate with acrylic paints. Must be sealed with a commercial water sealant to waterproof.

PAPERCLAY 10 KG

Traditional pottery clay with cellulose fibre. This popular and forgiving medium offers a multitude of benefits. All 5 paper clays allow you to achieve fine detail and surface texture. Suitable for handbuilding. The tiny fibres are barely visible and may be burnished smooth with a finger, rubber rib or stone. The knitting together of the paper fibres adds considerable strength when dry. This added strength is a bonus when transporting your piece. **Joining at any stage:** Best joined at leather hard stage, wet paper clay can be successfully joined to dry clay and vice versa by scratching and gluing with paper clay slurry. **Repairs:** Breakages are easily repaired by simply joining with paper clay slip. Should cracks appear, putty crack with more paper clay. The application of under glazes is recommended AFTER bisque firing.

DESCRIPTION	Colour	FIRING	PRICE PER BAG
KEANES Terracotta	Terracotta -Warm Red	1100-1280C	26.00
KEANES Earthenware & White Raku	White	1100-1280C	26.00
KEANES Stoneware / Porcelain	White	1280C 1280 - 1300C	26.95

POWDERED CLAYS – Casting Powder (25kg)

Description	Colour	25kg bag
AC300 Walkers Earthenware /Mid Fire	White	60.40
Keanes J Cast Porcelaneous Stoneware	White	65.40
Walkers No. 10 Stoneware	Grey white @ 1300C	46.85
Superior White Porcelain	White	108.60
Polar White	White	50.00

SLIPS

Description	Colour/Temperature	5LT Pail	10lt Pail (19kg)
Walkers White Earthenware	White. 1080-1250	45.25	69.00
Walkers White Midfire Slip	White. 1200	45.25	69.00
Walkers Stoneware No. 10	Grey white. 1260-1300	45.25	69.00
Walkers Superior White Porcelain	Bright white. 1300	51.00	83.00
Clayworks Southern Ice Porcelain	Translucent white. 1300	106.60	
Lumina	Translucent White. 1300	85.00	150.25

Cesco Coloured Slips

1 Ltr

- Mushroom Pink – 29.40
- Seville Orange – 33.80
- Chilli Red – 38.20
- Lemon Yellow -31.70
- Apple Green – 33.95
- Cornflower Blue – 31.70
- Berry Blue – 38.20
- Eggplant – 35.20
- Spinach Green – 26.60
- Licorice Black – 40.00



CHRYSANTHOS UNDERGLAZES

						
UG001 (A) WHITE	UG005 (B) CANARY YELLOW	UG009 (B) BRIGHT YELLOW	UG013 (B) CITRUS	UG017 (B) LOTUS YELLOW	UG021 (B) FLESH	UG025 (C) BEIGE
						
UG029 (B) PEACH	UG033 (B) APRICOT	UG037 (C) BURNT ORANGE	UG041 (C) SAFFRON	UG045 (C) MELON	UG049 (C) MANDARIN	UG053 (C) PEACH CAMEO
						
UG057 (A) CORAL	UG061 (A) CORAL PINK	UG065 (C) PERSIMMON	UG069 (A) CORAL RED	UG071 (C) ROCKET RED	UG073 (A) RUBY RED	UG077 (A) DEEP PLUM
						
UG081 (A) BURGUNDY	UG085 (A) ROSE PINK	UG087 (A) PETAL PINK	UG089 (A) CARNATION PINK	UG093 (A) DEEP ROSE	UG097 (C) LIGHT JADE	UG101 (B) JASPER
						
UG105 (C) JADE GREEN	UG109 (C) PEACOCK	UG113 (B) PARIS GREEN	UG117 (B) LIME	UG121 (B) CHARTREUSE	UG125 (B) MEDIUM GREEN	UG129 (B) APPLE GREEN
						
UG133 (B) OLIVE GREEN	UG137 (C) FOREST GREEN	UG141 (C) LEAF GREEN	UG145 (C) BRUNSWICK GREEN	UG149 (C) BABY BLUE	UG153 (C) TURQUOISE	UG157 (C) SUMMER BLUE
						
UG161 (C) ELECTRIC BLUE	UG165 (C) BRIGHT BLUE	UG169 (C) COBALT BLUE	UG173 (A) ORCHID	UG177 (A) LAVENDER	UG181 (A) REGENCY PURPLE	UG183 (A) VIOLA
						
UG185 (A) ROYAL PURPLE	UG189 (A) PURPLE BLUE	UG193 (C) ART GREY	UG197 (C) GOLD BROWN	UG199 (C) MID BROWN	UG201 (A) BERRYWOOD	UG204 (A) TERRACOTTA
						
UG206 (A) QIAOKELI	UG209 (A) ANTIQUE BROWN	UG213 (A) CRIMSON	UG216 (C) COBALT BLACK			

60ml \$6.95
500ml \$37.90

***Not available in 1Ltr**

UNDERGLAZE

CESCO UNDERGLAZES

Cesco Underglazes are intermixable (except for No.17 Orange). Suitable for most earthenware bodies. Best results will be obtained by firing to 1100°C under Clear Earthenware Gloss Glaze. Most underglazes will fire to stoneware temperatures with some loss of colour intensity. May be fired on greenware or bisque either under or over glaze. Available in 100 ml, 500 ml, 1 ltr, or 5 ltr on firm order.

CESCO UNDERGLAZES		
GROUP 1		
FQ1	Arctic Blue (No.1)	100ml - \$17.75
FQ2	Rose (No.2)	500ml - \$67.95
FQ3	Grey (No.3)	1 Ltr - \$110.95
FQ4	Puce (No.4)	
FQ5	Forest Green (No.5)	
FQ6	Turtle Brown (No.6)	
FQ7	Amulet Green (No.7)	
FQ10	Reef Gold No.10)	
FQ11	Cobalt Blue (No.11)	
FQ12	Ebony Black (No.12)	
FQ13	White (No.13)	
FQ14	Celeste (No.14)	
FQ15	Violet (No.15)	
FQ16	Fawn (No.16)	
FQ17	Orange (No.17)	
FQ18	Blue Grey (No.18)	
FQ21	Jade (No.21)	
FQ22	Red Brown (No.22)	
FQ24	Flesh Pink (No.24)	
FQ25	Chocolate Brown (No.25)	
FQ26	Maroon (No.26)	
FQ27	Mint Green (No.27)	
FQ29	Purple (No.29)	
GROUP 2		
FQ9	Deep Blue (No.9)	100ml - \$20.20
FQ20	Victoria Green (No.20)	500ml - \$68.40
FQ23	Daffodil Yellow (No.23)	1 Ltr - \$118.80
FQ28	Nasturtium (No.28)	
GROUP 3		
FQ8	Brick Red (No.8)	100ml - \$25.85
FQ19	Royal Blue (No.19)	500ml - \$88.90
FQ30	Flame (No.30)	1 Ltr - \$156.95
FQ31	Hot Orange (No.31)	
GROUP 4		
FQ32	Bright Red (No.32)	100ml - \$37.60
		500ml - \$129.60
		1 Ltr - \$230.60



The colours shown are as close as printing process permits.

UNDERGLAZE PENCILS & CRAYONS

Amaco pencils: Blue, Black, Brown, Green, Rose, Yellow - \$25.30 each



Amaco crayon sets: \$69.95 each

UNDERGLAZE CHALK CRAYONS SET NO. 208 (41252J)



(O)=Opaque (TP)=Transparent (TL)=Translucent (ST)=Semi-Translucent (SO)=Semi-Opaque
 ☑ Dinnerware safe when covered by any dinnerware safe glaze such as AMACCO® LG-10, F-10, and HF-9 clear glazes
 AMACCO® Underglaze Chalk Crayons have only been tested and approved as dinnerware safe when applied and fired under AMACCO® LG-10 Clear glaze.

UNDERGLAZE CHALK CRAYONS SET NO. 209 (41253K)



(O)=Opaque (TP)=Transparent (TL)=Translucent (ST)=Semi-Translucent (SO)=Semi-Opaque
 ☑ Dinnerware safe when covered by any dinnerware safe glaze such as AMACCO® LG-10, F-10, and HF-9 clear glazes
 AMACCO® Underglaze Chalk Crayons have only been tested and approved as dinnerware safe when applied and fired under AMACCO® LG-10 Clear glaze.

DECALS



WHAT IS A DECAL AND HOW DOES IT WORK?

A ceramic decal consists of several layers of materials. A bottom layer of backing paper with its glue-like substance, an intermediate layer of printed colours and a top layer of lacquer coating (cover coat). The backing paper is porous so it will absorb water. This softens the glue and releases the printing allowing the design to be transferred from the paper on which it was printed to the surface being decorated. Special inks are used which can withstand the high firing temperatures. CERAMIC DECALS, GLASS DECALS and NON FIRE DECALS are made with different inks.

Decals can be applied to any solid sealed surface. Ceramic Decals are usually applied on **fired glazed finishes**. Most of these surfaces are white, ivory, or pastel colours. Most are not opaque enough to provide good results against dark backgrounds.

Northern Rivers Pottery Supplies has a selection of decals in stock, come in store to take a look.

ENGOBE (Base Coat)

To be applied to Terra Cotta clay to make glazes & underglazes fire to the same colour as they would on white clay. Brush onto leather hard greenware and decorate before bisque firing. Suits standard Earthenware bodies.

500ml \$10.40 1 Litre \$18 5 Litre \$55.95

TERRA SIGILLATA

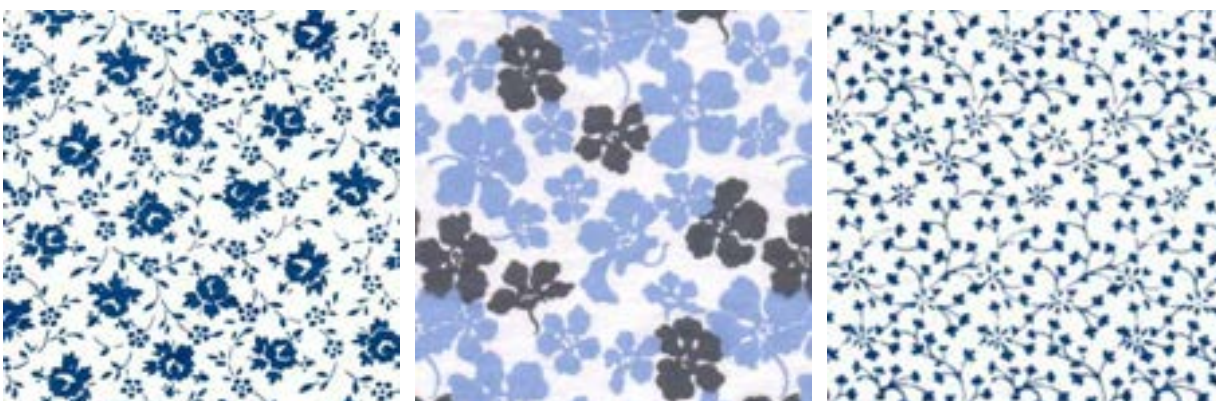
Terra Cotta slips to be applied to white bodies. Brush onto leather hard greenware and decorate before bisque firing. Suits standard EW bodies. Terra sigillata is an ultra refined clay slip that can give a soft sheen when applied to bone-dry wares and, if polished or burnished while still damp, may give a high gloss.

1 Litre \$15.70 5L \$58.05

TISSUE TRANSFERS

Tissue transfers are an easy and cost effective way to add intricate patterns and designs to your work. The transfers can be applied to moist clay, leather hard, bone dry, bisque or top a white glaze as a majolica application. Prices range from \$10 - \$30 per sheet. Please check that specific designs are in stock.

Japanese Tissue Transfers – See below for examples but many more available – come in and have a browse!



Lustres

Gold 12% - 2g	\$61
Platinum- 2g	\$49.80
Gold and Platinum Thinning Oil	\$7
Kemper Gold Pen	\$22
Kemper Gold Pen Cleaner	\$7.60
Kemper Wipe Out tool	\$11.5



FERRO STAINS

Please note, due to Ferro no longer manufacturing their products in Australia once the stains below are sold out, they will no longer be available.

CODE	COLOUR	MAX TEMP	50gm	100gm	500gm	1kg
10163	Stone Yellow	1350C	12.40	22.35	76.40	137.55
11156	Chocolate Brown	1350C	10.00	18.10	64.65	111.00
12021	Maroon	1250C	17.15	31.80	105.20	189.40
15033	Royal Blue	1350C	16.20	29.25	99.75	171.00
15072	Dark Blue	1300C	11.95	21.60	73.60	125.80
CK12390	Violet	1250C	21.65	39.00	133.00	228.15
13103	Grey	1300C	3.55	6.50	44.65	80.90
	Coral	1250C	6.00	12.00	25.00	44.85

POTTERS COLOURS

Powdered Potters Stains for use in all types of decoration. Add to base glazes or mix with *brushing medium* to make an underglaze, should be mixed to a consistency of smooth cream. Approx. 30gms of stain to 100mls of brushing medium is the usual mixing amount.

Stains can be added to any glaze to colour. The makeup of the glaze can affect colour development. For example, a lot of stoneware glazes containing zinc will leach out the colour of some stains. To a clear glaze, stain will give a vibrant colour and to a white glaze it will give pastel shades. Stains can be added to glazes up to about 10%.



CODE	COLOUR	MAX TEMP oC	50gm	100gm	500gm	1kg
FW5401	Intense Yellow	1300	9.00	14.30	55.00	80.00
FW5601	Black (Cobalt Free)	1300	15.60	26.00	83.30	126.50
FW5674	Intense Black	1300	19.50	32.50	112.00	170.00
FW5818	Intense Orange	1250	20.80	34.45	118.00	181.50
FW5377	Intense Bright Blue	1300	19.50	32.50	104.30	161.70
FW5806	Bright Red	1300	20.40	36.00	139.20	217.60
FW5020	Manganese Alumina Pink Potters Stain	1300	13.29	22.58	47.98	126.50

***More colours available upon request**

POWDERED GLAZES

CESCO CLEAR GLAZES

CODE	TEMP	1kg	5kg	25kg Bag
EW GLOSS -LEAD FREE 5381	1040-1120C	15.85	64.85	260.80
EW -LEAD FREE 6101	1080-1120C	15.85	64.85	260.80
MID FIRE- LEAD FREE 6250	1120-1230C	18.00	76.00	378.00
SW -LEAD FREE GLOSS 4914	1260-1320C	17.85	69.80	314.00
SW WHITE OPAQUE- LEAD FREE 4915	1260-1320C	22.70	106 .00	452.00

POWDERED STONEWARE GLAZES



**More colours available upon request*

Colour	500g	1kg	5kg	25kg
Cesco Dolomite SW Glaze		20.95	91.95	393.70
Cesco Hyacinth Blue		23.95	95.95	393.70
Cesco Copper Rust		22.70	95.95	398.70
Cesco Tomato Red		22.70	95.95	393.70
Cesco White Satin		22.70	95.95	393.70
Cesco Prussion Blue		22.70	95.95	398.70
Cesco Royal Blue		22.70	95.95	398.70
Cesco Kiwi Spangle		22.70	95.95	
Cesco Grape Spangle		22.70	95.95	
Cesco Watermelon Spangle		22.70	95.95	

Northcote Ming	23.00	42.00	210.00	
Northcote Pink	23.00	42.00	210.00	
Northcote Black Satin	23.00	42.00	210.00	
Northcote Shino Style	23.00	42.00	210.00	
Northcote Tin Blue	23.00	49.00	210.00	
Northcote Jade	23.00	42.00	210.00	

BRUSH ON GLAZES

CESCO BRUSH-ON GLAZES WITH LEAD

Cesco Brush-on Flow-rite glazes are ready to use and easy to apply. These glazes **ARE NOT** suitable for pieces in contact with food or beverages.

EW GLOSS GLAZE 1080-1100C-Lead

500ml: \$20.60 1 Litre \$36.50

Silver
Crackle Goldene
Transparent Green

CADMIUM GLAZE 1000-1040C - Lead

500ml: \$28.95 1 Litre: \$48.95

Daffodil Yellow
Tangerine Orange
Signal Red
Flambe Red
Lime Green
Burnt Orange

BRUSH-ON GLAZES LEAD FREE

Cesco Brush-on Flow-rite glazes are ready to use and easy to apply. RED LABEL Minus 2 p.p.m. (parts per million) glazes when used in accordance with the printed directions will yield less than 2 p.p.m. of soluble lead and comply with permissible limits for glazed food and beverage wear. Lead free glazes are suitable for use in schools.

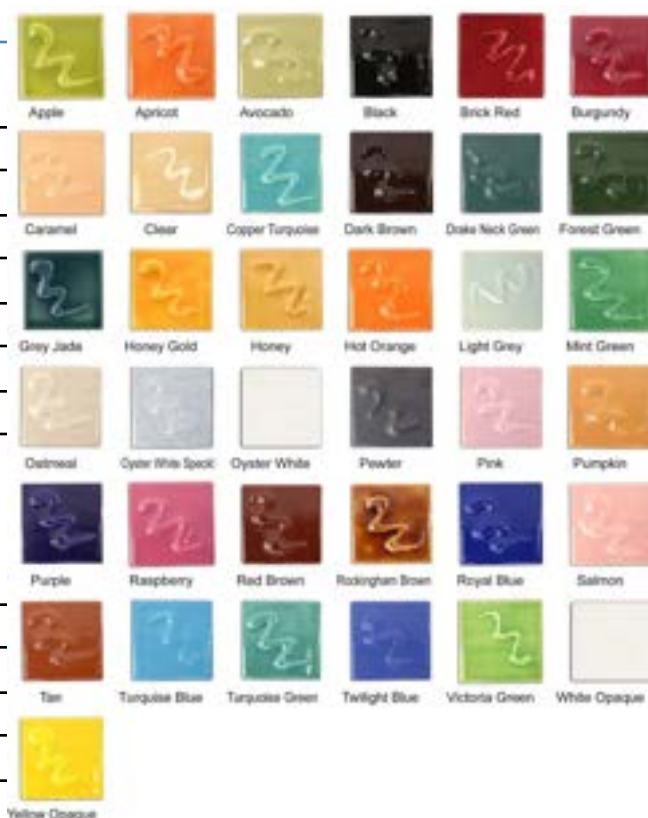
CLEAR GLOSS GLAZES

TEMP	DESCRIPTION	500ML	1 Lit	5 Lit	10 Lit
1080-1100C	6101 Standard clear gloss glaze	13.95	24.75	105.95	192.40
1040-1120C	5381 Super gloss clear glaze	13.95	24.75	105.95	192.40
1040-1120	5600 Clear Satin (Translucent)	13.95	24.75	105.95	192.40
1180-1220C	6250 Mid range clear gloss	15.85	26.75	105.95	192.40
1280-1320	4914 Stoneware clear gloss	19.95	35.95	153.95	259.00

EARTHENWARE COLOURED GLOSS GLAZES 1080-1100C

GROUP ONE: 500ml \$20.50 / 1 Litre \$38.45

Aventurine	Oyster White
Apple	Mist Blue
Apricot	Oyster White Speckle
Avocado	Pewter
Caramel	Pink
Copper Turquoise	Pumpkin
Dark Brown	Red Brown
Drake Neck Green	Rockingham Brown
Forest Green	Salmon Pink
Grey Jade	Tan
Jade Blue	Opal White
Midnight Blue	Peacock Blue
Mist Jade	Mist Green
Honey	Twilight Blue
Honey Gold	Turquoise Blue
Mist Grey	Turquoise Green
Mint Green	White Opaque
Oatmeal	Yellow Opaque



GROUP TWO: 500ml \$22.50 / 1 Litre \$40.15

Black
Burgundy
Purple
Raspberry
Royal Blue

GROUP THREE: 500ml \$30.05 / 1 Litre \$50.10

Brick Red
Hot Orange

Mid Fire-Stoneware Brush on Glazes

Mayco Glazes

From \$27-\$35/ 118ml - See in store for range



Amaco Glazes

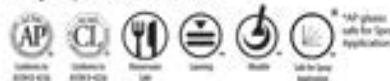
From \$27-\$35/ 118ml- See in store for range

POTTER'S
choice
for a reduction look



Celadon
The art of the Celadon glaze is to create a look of natural beauty.

Category: Mid-High Fire Glaze
Firing Temperature: Cone 5 - Cone 6



RAW MATERIALS

Some of the following materials have a S5 or S6 poison rating and therefore must be handled with care. They are not to be consumed. Children must be supervised when using these products. Due care must be taken when using these materials - wear eye and face protection and DO NOT BREATHE DUST. In case of insufficient ventilation, suitable respiratory protection should be worn.

For further information MSD's (Material Data Sheets) are available from NRP.

	500GM	1 KG	5KG	PER BAG (BAG KG WEIGHT)
Alumina Calcined 100#		11.90	40.40	163.00 (25)
Alumina Hydrate 240#		11.90	40.40	163.00 (25)
Ball Clay - FX (CA1)		8.00	13.00	38.00 (25)
Bentonite		9.70	21.75	53.75 (25)
Bone Ash Natural		21.80	90.00	345.00 (22.7)
Borax S6 POISON		18.95	78.00	n/a
Colemanite		17.50	70.00	
Dolomite Natural		5.00	18.50	45.00 (25)
Fireclay - Walker's Fireclay			16.80	45.00 (25)
Gerstley Borate	9.20	13.00	48.00	173.00 (22.7)
Grog 30# (White Fine)			19.20	60.00 (25)
Gum Acacia/Gum Arabic	26.40	47.25		
Eckalite 1 (Kaolin)		11.90	26.75	65.00 (25)
Nepheline Syenite 200#		11.90	26.75	65.00 (25)
Potash Feldspar (Gimpex)		8.00	17.15	44.70 (25)
Silica 200# S6 POISON		7.00	15.00	37.00 (25)
Soda Ash		15.00	36.00	144.00(25)
Soda Feldspar		10.80	25.00	61.00 (25)
Talc N325 Super White		6.00	18.50	48.25 (25)
Whiting (Omya 10) (Calcite)		8.00	13.00	38.00 (25)
Wollastonite		10.85	35.00	121.60 (25)
Ilmenite Sand	10.00	18.00	36.00	
Molochite 200		28.00	91.00	336.00 (25)
Petalite		23.00	83.20	340.40 (25)
Pyrophyllite	15.00			
Spodumene	11.90	23.00	80.80	325.50 (25)
Rhyolite/Casper		8.00		
Rutile Flour	24.00	35.70	130.00	poa
Rutile Sand		30.00	50.00	
Zircosil Opacifier 5 Micron	13.50	19.60	74.20	279.00 (25)

OXIDES

Please note that the market price of oxides and carbonates fluctuate regularly.
Check in store for correct up-to-date pricing

IRON OXIDES	25g	50g	100 g	500g	1kg	5kg
Crocus Martis (Ferric)(Purple) S6 POISON				15.00	22.35	93.80
Red Iron Oxide Natural (ferric) (25kg - \$99.50)				9.50	16.85	39.50
Black Iron Ox (ferrous) S6 POISON (25kg \$245)			5.00	12.00	17.40	66.70
Yellow Iron Oxide/Yellow Ochre Syn S6 POISON (20kg - \$230)				11.30	16.30	61.80
CARBS & OXIDES	25g	50g	100 g	500g	1kg	5kg
Barium Carbonate S6 POISON (25kg - \$256)			\$4.50	9.00	17.40	65.70
Chrome Oxide			5.50	23.40	35.75	133.60
Cobalt Oxide (black 72% cobalt)	11.80	25.30	40.90	145.20	227.80	poa
Cobalt Carb		21.80	34.50	131.00	224.40	poa
Copper Ox (cupric) (Black) S6 POISON	8.00	14.00	26.00	44.00	71.00	290.00
Copper Carb S6 POISON		11.00	20.00	55.90	83.00	323.00
Lithium Carbonate		15.00	28.00	73.50	130.50	565.00
Manganese Dioxide (25kg - \$126)					13.00	48.60
Nickle Oxide		16.00	25.30	80.40	127.00	poa
Tin Oxide		16.00	28.30	91.10	143.50	poa
Titanium Dioxide			5.00	15.00	25.50	85.00
Zinc Oxide (25kg - \$295.80)				14.20	20.70	78.50
Praseodymium Oxide		49.00	79.00	327.00	537.00	
Mag Carb Light (25kg - \$271)				13.00	19.00	71.00
Mag Carb Heavy					9.60	18.00
Strontium Carb (22.7kg - \$152.50)				11.00	18.50	66.25

LIQUID BRUSH ON CARBS & OXIDES – we can order if not in stock

	100ml	500ml
Chrome Oxide	16.50	50.70
Copper Oxide	16.50	50.70
Ferric Oxide	14.50	45.00
Manganese Dioxide	14.50	45.00
Cobalt Carbonate	23.90	75.00

FRITS

A frit is a type of ceramic glass. It is a combination of materials which are melted together to render them insoluble and resistant to acid attack. They are a means of introducing certain materials into a glaze which would otherwise be toxic. Frits can be used alone as low temperature glazes e.g. Raku and Majolica, but generally they form the basis of a glaze recipe.

LEAD FRITS

Glazes based on lead frits produce a shiny, durable finish and give brightness and clarity of colour when used in conjunction with oxides, stains, slips etc. While they can be used on all earthenware clays, they are particularly suited for red clay.

BORAX FRITS

Borax frits are often used in the production of earthenware glazes when a lead free frit is required. Slight milkiness, especially at low temps, may be evident over red clays and the colour response with oxides etc. is not usually as vivid as with lead frits.

ALKALINE FRITS

Similar to borax frits, alkaline frits are noted for their high soda and potash content. The colour response from copper and manganese is turquoise and purple/brown respectively - typical of this type of frit. Alkaline frits have a high expansion rate which makes them a suitable base for crackle glazes.

FERRO FRITS

4110 (Previously No. 3110) Lead free, alkaline, high expansion. 1000-1060C. Copper blue & manganese purple glazes. Good for crackles.

4124 (Previously No. 3124) Lead free calcium borosilicate frit. EW 1040-1100C. Suitable for glazes covering underglaze colours.

4171 (Previously No. 3271) Lead free calcium borosilicate frit. Suitable for low temps. EW 1040-1100C

4131 REPLACES 4108 & 4113 4108 No longer available. Use 4131 instead. If 4131 is needed to fire to a higher temp than 1100C, add 10% silica. Lead free, high boric oxide, alumina free frit. EW1040-1100C. Useful for special effects in Raku glazes.

4064 (Previously No. 4364) Lead Basilicata frit. Standard low solubility. 950-1080C. 4113 (Old No. 4712) No longer available. Use 4131 instead. If 4131 is needed to fire to a higher temp than 1100C, add 10% silica.

4101 A high alkaline leadless frit useful for Raku glazes. Can be used to increase thermal expansion in most glazes **3134** – Calcium Boron Frit (leadless) use 60% with 40% 4131 to make 4108 -

9146 – Zircon Frit

4064- Lead bisilicate frit. 950C-1050C

No.	Previous No.	1 kg	5kg	22.7kg bag (requires order)
4110	3110/1078	18.50	69.95	294.80
4124	3124	20.70	76.50	295.80
4131	4108/4113	20.15	76.40	287.50

4064	3531/4364	35.00	142.90	510.50
4101			90.00	
4171	3271		90.00	
3134		20.70	78.50	295.00
9146		20.15	76.40	287.50

CONES

Box of 50 standard cones \$48.20

Pk of 10: \$10.00

Individual Cones - \$2 each

Box of 50 mini cones: \$38.20

Pack of 10: \$8

CONE No.	60 deg/hr	150 deg/hr	CONE No.	60 deg/hr	150 deg/hr
021	602	614	1	1136	1154
020	625	635	2	1142	1162
019	668	683	3	1152	1168
018	696	717	4	1168	1186
017	727	747	5	1177	1196
016	764	792	6	1201	1222
015	790	804	7	1215	1240
014	834	838	8	1236	1263
013	869	852	9	1260	1280
012	866	884	10	1285	1305
011	886	895	11	1294	1315
010	887	905	12	1306	1326
09	915	923	13	1321	1346
08	945	955	15	1388	1366
07	973	984	15	1424	1431
06	991	999			
05	1031	1046			
04	1050	1060			
03	1086	1101			
02	1101	1120			
01	1117	1137			

PYROMETERS & PROBES *These products need to be ordered in

TYPE K PROBE: (CHROME ALUMINEIL) 1000C MAX (MANUFACTURER RECOMMENDS TEMP SHOULD NOT EXCEED 1000C) Thermocouple (Probe) & Sheath -POA

TYPE N PROBE: (NICROSIL/NISAL) TO 1300C MAX (MANUFACTURER RECOMMENDS N TYPES SHOULDN'T BE USED MUCH OVER 1100C) Thermocouple (Probe) & Sheath - POA

TYPE R PROBE: (PLATINUM RHODIUM) 1400C MAX Sheathed Thermocouple (Probe) RG1313 Pyrometer - POA

NB: WHEN WIRING COMPENSATING LEAD TO PROBE, RED IS NEGATIVE AND ORANGE IS POSITIVE COMPENSATING LEAD FOR ALL MODELS: \$4 PER METER

KILN FURNITURE

SHELF PROPS

SIZE	PRICE	SIZE	PRICE
1" (25mm)	3.80	7" (175mm)	\$12.95
2" (50mm)	5.00	8" (200mm)	\$14.50
3" (75mm)	6.70	9" (225mm)	\$16.20
4" (100mm)	8.50	10" (250mm)	\$18.00
5" (125mm)	9.85	11" (275mm)	\$19.25
6" (150mm)	11.10	12" (300mm)	\$20.80

STILTS (STEEL POINTED) 1100C

CODE	SIZE	PRICE
NJ25	25mm point to point	4.85
NJ30	30mm point to point	4.95
NJ35	35mm point to point	5.60
NJ55	55mm point to point	6.60
NJ70	70mm point to point	6.70
NJ85	85mm point to point	6.95

CODE	SIZE	PRICE
C-semi-90	90mm curved	\$3.60
C-semi-55	55mm curved	\$3.20
ST-80-tall	80mm ptp x 3	\$6.95
ST-60-tall	60mm ptp x 3	\$5.60
T19	Bar stilt 9 pin 110mm long	\$4.00

<u>1280C STILTS - ROSELLI</u>		
R10	1.0cm	\$2.70
R13	1.3cm	\$2.95
R20	2cm	\$3.25
R26	2.6cm	\$4.20
R35	3.5cm	\$5.00
R76	7.6cm	\$6.10

EARTHENWARE BISQUE TILES

Terra Cotta 10cm x 10cm

\$3.00 each (box of 80 \$40 while stocks last)

Buff 15cm x 15cm

\$4.80 each or \$85 box of 80 - \$105.00

KILNS/SHELVES/BATS

We are agents for Tetlow Kilns and Woodrow Kilns.

Wethertex Throwing Bats: made from compressed hardwood

19cm - \$13.30

33cm (to fit standard Venco wheel head) - \$18.80

40cm - \$25.50

BAT MATE: BLUE: \$18.45 & YELLOW: \$19.90

Batmate is the perfect solution for bat jitter and warping. Place a batmate below your problem bats on the wheel and instantly your warped bats become stable. It is also great for trimming bowls and plates. No clay pad required.

KILN SHELVES:

We keep in stock a small amount of various sizes however every kiln is different and different firing temps require different shelf thickness. Therefore, it is best if you call us with your specific measurements and we can organise a quote.

REFRACTORY MATERIALS

Firebrick – R126 (229x110x76mm) - \$12.80

CERAMIC FIBRE INSULATION (BLANKET)

Cerachem Blanket 1430C - \$44/mtr or \$292.00 for box (7.6mtr roll)

Blanket Plugs \$4 each

REFRACTORIES, CEMENTS & ADHESIVES

CEMENT FONDUE

This is used for various applications such as building kilns using vermiculite as an insulation. The suggested mix when it is being used as an insulating concrete is a 5-1 ratio of vermiculite to Cement Fondue for a max temp of 900C. Cement Fondue is a hydraulic cement with an alumina content of approx 40%. It imparts excellent mechanical strengths to concrete based on the appropriate refractory aggregate. Due to the presence of iron oxides in Cement Fondue, it is not recommended in reducing atmospheres. It must be stored in dry conditions, preferably off the ground. It has a pyrometric cone equivalent to 1270C.

1kg \$8.40

5kg \$26.50

25kg \$119.30

Zirco wash- (Blanket hardener) Used to paint on blanket inside kiln- 1Lt \$50.60

Pyrocrete refractory cement -25kg bag \$80.00

Jointing Cement: 1kg - \$18.80

Blanket Adhesive: 750g - \$22

Bat Wash: \$10.30 kg

VENCO PRODUCTS

Please email or call to order

VENCO WHEEL NO. 3 HEAVY DUTY- \$1,472



Wheel Head: 13" diameter, aluminum Motor: 370W 1/2HP resilient mounted . Size: 69cm (L) x 51cm (w) x 56cm (h) Weight: 30kg Speed range: 0-240rpm. Wheel head 'free wheels' in the off position Guaranteed for 12 months against defective parts or faulty workmanship

VENCO DIRECT DRIVE WHEEL- \$1,972



13" wheel head with bat pins. Wireless foot pedal . 550W direct drive permanent magnet motor. Stainless steel body and legs. Cast aluminium splash tray
Intelligent computer-based speed controller, super smooth. Speed range: 0 - 300 rpm (forward and reverse) Weight: 25kg Size: 69cm (L) x 51cm (w) x 51cm (h) Guaranteed for 12 months against defective parts or faulty workmanship

We offer Wheel Service – from \$140

SPARE PARTS FOR VENCO WHEELS	PRICE
Plastic grommets (2 sizes)	\$6 ea
Spring - small	\$8.80
Spring - large	\$15
Bush Bearing Kits (3/5/6)	\$42
Cone - all models	\$52
Drive wheel assembly (3/5/6)	\$110
Wheelhead 11" Diameter (3/4" shaft) 13" Diameter (1" shaft)	POA
Pegs for wheelhead	\$6 ea
Riser batts	\$50 ea
Brass Collars	\$10.00 ea
Motor Cradle	\$70

VENCO PRODUCTS

PUGMILL- \$POA

A pug mill is used to blend clay to restore it to a more uniform workable consistency. This applies to new clay or clay scraps from previous work. Clay is loaded into the feed hopper (closest to the motor) and an internal auger pushes the clay along the barrel, through some fine screens before recompressing the clay and forcing it out the nozzle. The de-airing models incorporate a vacuum pump which removes air trapped within the clay while pugging is performed. This produces the highest quality clay for immediate use on a potter's wheel.

Traditionally a similar result was obtained by kneading the clay with hands or feet for several hours. This is still done in many countries but a pug mill can make the task easier and quicker than the traditional manual method. Approximately one hour of pug mill use will produce enough pugged clay for an average professional potter's day's work.

VENCO 75MM (3") STANDARD PUGMILL - \$POA

Stainless steel auger with marine grade aluminium barrel

75mm nozzle diameter, 136mm barrel diameter

Hopper opening 115x110mm

370W (1/2hp) fan cooled single phase motor with overload protection

Can be upgraded for deairing with 75mm de-air upgrade kit

Guaranteed for 12 months against defective parts or faulty workmanship

DE AIRING PUGMILLS

Stainless steel auger with marine grade aluminium barrel 75mm nozzle diameter, 136mm barrel diameter Hopper opening 115 x 110mm Output ph depends on size 180kg - 360kg 370W (1/2hp) fan cooled single phase motor with overload protection Stainless steel mesh style shredder screen Stainless steel fasteners used throughout 300W vane style vacuum pump

VENCO HAND EXTRUDER- \$420

(wall mounted) Optional die set (8 piece) All stainless steel 76mm (3") x 300mm (12") barrel

Easy-fit, bayonet lock die holder. Non-slip, notched lever plate Comes with 4 dies and one blank die for your custom extrusions. * Optional, 8 piece, advanced die set



BRUSHES

Hake Glaze Brushes – Long handle

76mm - \$9.50

51mm - \$6.10

Soft bamboo glaze brush - \$9.60

Hake Glaze Brushes – Short handle

70mm - \$9

75mm - \$9

85mm - \$13.50

MOP Brushes

¾" – from 7.20



Franchville fan brushes

No. 1212 Hog Hair (220mm) - \$7.15

No. 12 Hog Hair FAN (210mm) – \$5.85

No. 10 Taklon FAN (200mm) - \$6.50

No. 6 Hog Hair fan (195mm) - \$4.95

No. 6 Taklon FAN (190mm) - \$6.40

No. 12 Large fan brush - \$20

1/8 " Stippler Badger Blend - \$3.10

¼" Stippler Badger Blend - \$3.65

½" dagger liner - \$9.75

FVL Pure red sable 3/8" - \$9.65

FVL Pure red sable ½" - \$15.75

FVL Popular golden taklon - \$13.60

Decorative Art Painting

910 taklon deerfoot stippler- \$7.75

906 ¼" taklon angular shader - \$7.35

No. 4 903 taklon short shader - \$5.70

906 3/8" taklon angular shader -
\$8.55

No. 8 904 Taklon long shader - \$7.65

No. 2 905 taklon fan - \$7.35

Calligraphy brushes

Size 0 - \$4.35

Size 1 - \$4.55

Size 5 - \$6.10

Size 7 - \$7.95

Size 9 - \$9.05

Size 11 - \$10.10

7 SKILLS

Fan brush - \$4.65

7" - \$5.00

LOOP TOOLS



www.diana-finearts.com

From \$5.20

WOODEN & STEEL MODELLING TOOLS

Bamboo teapot handles various sizes – round and square – All \$5.00 each
Small hand held extruder and dyes \$15.50



Hole Makers: from \$3.95

Cutting Wire \$4.80

Cutting Wire Rubber \$5.80



TOOLS (Continued)

- Loop with brush \$3.00
- Texture Tool
- Hole clean up brush \$7.75
- Potters Thumb \$6.50
- Handle Makers from \$3.90
- Sgraffito from \$5.40
- Kushi Comb \$14.50
- Pottery needles from \$4.25
- Potters Knives from \$4.50
- Clean up spear \$5.95



Xiem Bat Lifter - \$11.80



Assorted wooden modeling tools from \$3.95



Texture brush - \$8.50



Ribbon Tools various shapes - 195mm \$11.75



Ribbon Tools Mini 130mm - various shapes \$6.90

Clay bag ties: \$6.60



Lace tool \$5



Turning Tools - \$10.10



Xiem Stamp letters- \$40.80



Clay wipe out tool: \$3.95

METAL KIDNEYS/RIBS

Serrated: \$5.00
Stainless Steel: \$4.40
Medium Orange small ribs \$3.60

RUBBER KIDNEYS/RIBS

Firm black rubber rib \$4.40
Soft Grey rubber kidney \$5.00
Medium blue rubber kidney \$4.40

WOODEN RIB

Boxwood Appleseed Rib for throwing \$4.80

MUD RIBS

These ribs (or kidneys) are constructed from a unique self-polishing resin that gets better with use.



**Blue - very Hard
Green - Medium
Yellow - Soft
Red - very Soft
Metal**

\$15.40

XIEM RIBS

Silicone Clay Ribs are great for shaping, smoothing and finishing clay in tight areas. Heat, solvent, stain and crack resistant. Available in soft or firm.



Silicone Soft Rib No. 7 Orange - \$10
Silicone Firm Rib No. 7 - Blue - \$10

SHREDDER

Shredders \$16.95
Replacement blades \$5.20



CALLIPERS

Metal : Small \$12, lge \$18 /Lidmaster: \$34.70



Slip Trailer – lge \$19.95
30cc pink slip trailer - \$8,80
50cc slip trailer - \$13.35
100cc slip trailer - \$15



Pottery Tool Kits 8 piece - \$15.50



BANDING WHEEL

Stainless Steel 2 sizes: 30cm - \$125 / 18cm - \$75
Plastic: \$24.50

Cast Iron- \$175

GARRITY TEXTURE TOOLS

\$20



SIEVES

Talisman Rotary Sieve Complete - \$315.00

Talisman Frame - \$58

Talisman Sieve Wire with Rubber Rim – 22cm – various mesh sizes - \$69.50

Sieve – Plastic frame fixed tight stainless steel - \$65

Sieve Frame plastic bucket - \$11.50

Sieve Plastic 26.5cm (various mesh sizes) - \$65

SIEVE MESH-While stocks last

30 x 30cm square mesh

30# \$14.70

40# \$15.80

60# \$21.00

80# \$18.30

100# \$19.00

120# \$22.50

Mould Straps - various sizes from \$5.40

SPONGES & SCRUBBERS

Synthetic Sponge Round - \$1.50

MUDSPONGE – White - \$13.20. / Orange - \$10.35 / Blue - \$10.35

Xiem Pro Sponge – Finishing - \$8.80 / Porcelain - \$8.80 / Stoneware - \$8.80

Sea Sponge - \$4.60

Large Rectangle Synthetic Sponge - \$6.80

Hydra Dome Sponge – Medium: \$5 / Large - \$8.80

Cattail Sponge - \$1

Sponge Stick - \$7.60

Sponge Holder 20mm - \$1.10 / 25mm - \$1.40

Silicone carbine fine & course scrubber \$4.00

Abrasive Files – Fine/Med \$7.80 / Course \$8.50

Steel Harp for cutting slabs \$39.50 (230mm high x 300mm wide)

Harp Replacement Wire: \$5.50

Small Harp - \$12.50

BRUSHING MEDIUM

100ml \$5.50

500ml \$10.00

1Ltr \$15.50

5Ltr \$58.90

DISPEX

Deflocculant used in casting slips. It keeps particles in suspension thereby eliminating the addition of great amounts of water.

100ml \$5.50

500ml \$15.50

1Ltr \$21.80

5Ltr \$87.20

SODIUM SILICATE

Deflocculant used in slips. Care must be taken not to overdose as thickening may occur. It may be used in conjunction with Dispex if required to stabilize flow characteristics.

100ml \$5.50

500ml \$9.50

1Ltr \$13.55

5Ltr \$49.80

SOFT SOAP

A high quality potash soap supplied as a gel. It is used in the production of plaster moulds. Mix it with an equal quantity of warm water and store as a parting medium for plaster mould making. Paint on the surface of the mould and wipe away any excess with a damp sponge.

100ml \$5.50

500ml \$12.25

1Ltr \$19.85

5Ltr \$79.40

WAX RESIST

100ml	\$5.50
500ml	\$17.80
1Ltr	\$27
5Ltr	\$119

HI FIRE WIRE

Kanthal Light: Per metre - \$2.90 (1200C)
Kanthal A1 (1.15mm dia) Per metre - \$3.45
Kanthal A1 (2.057mm dia) Per metre - \$9.00